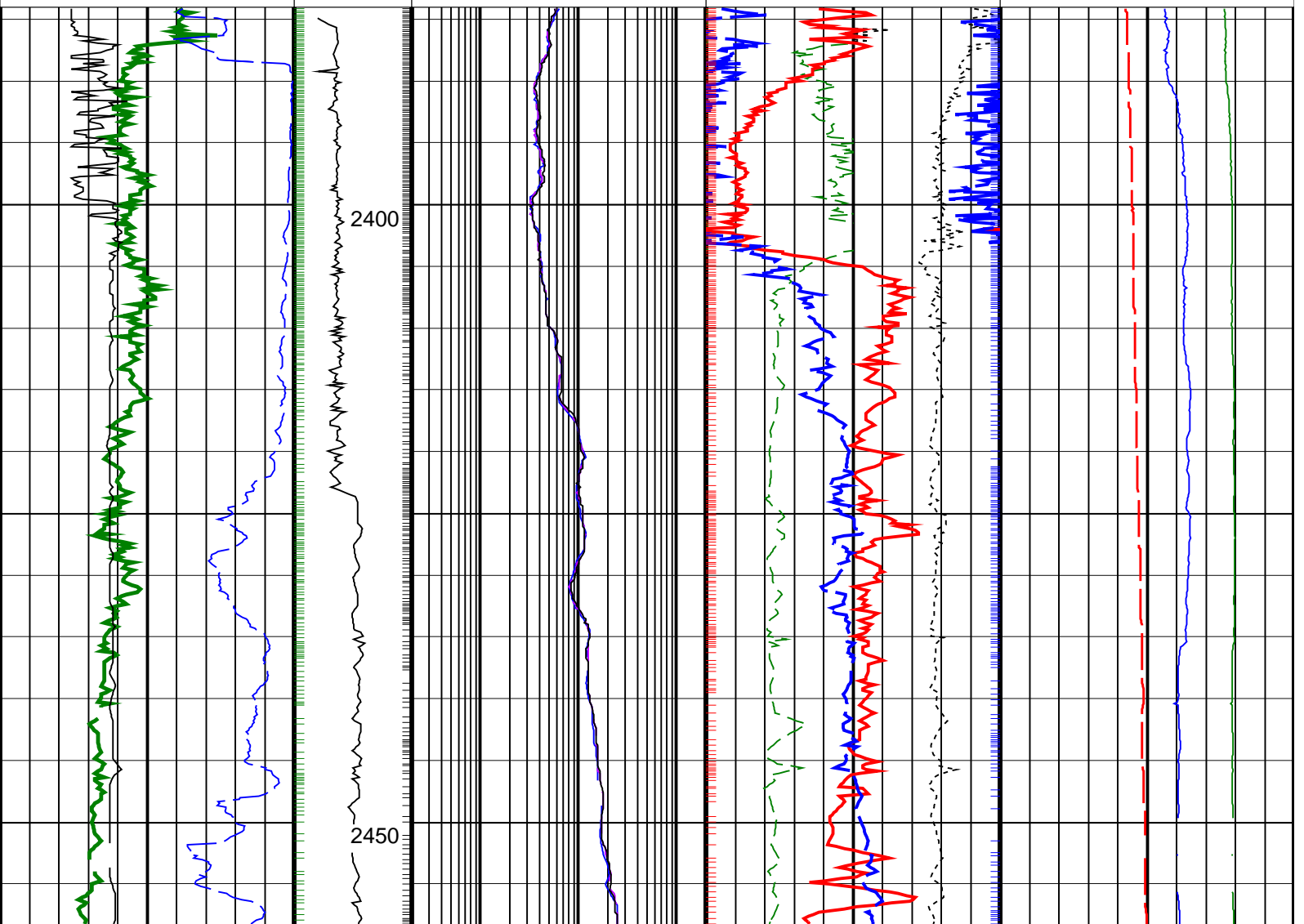
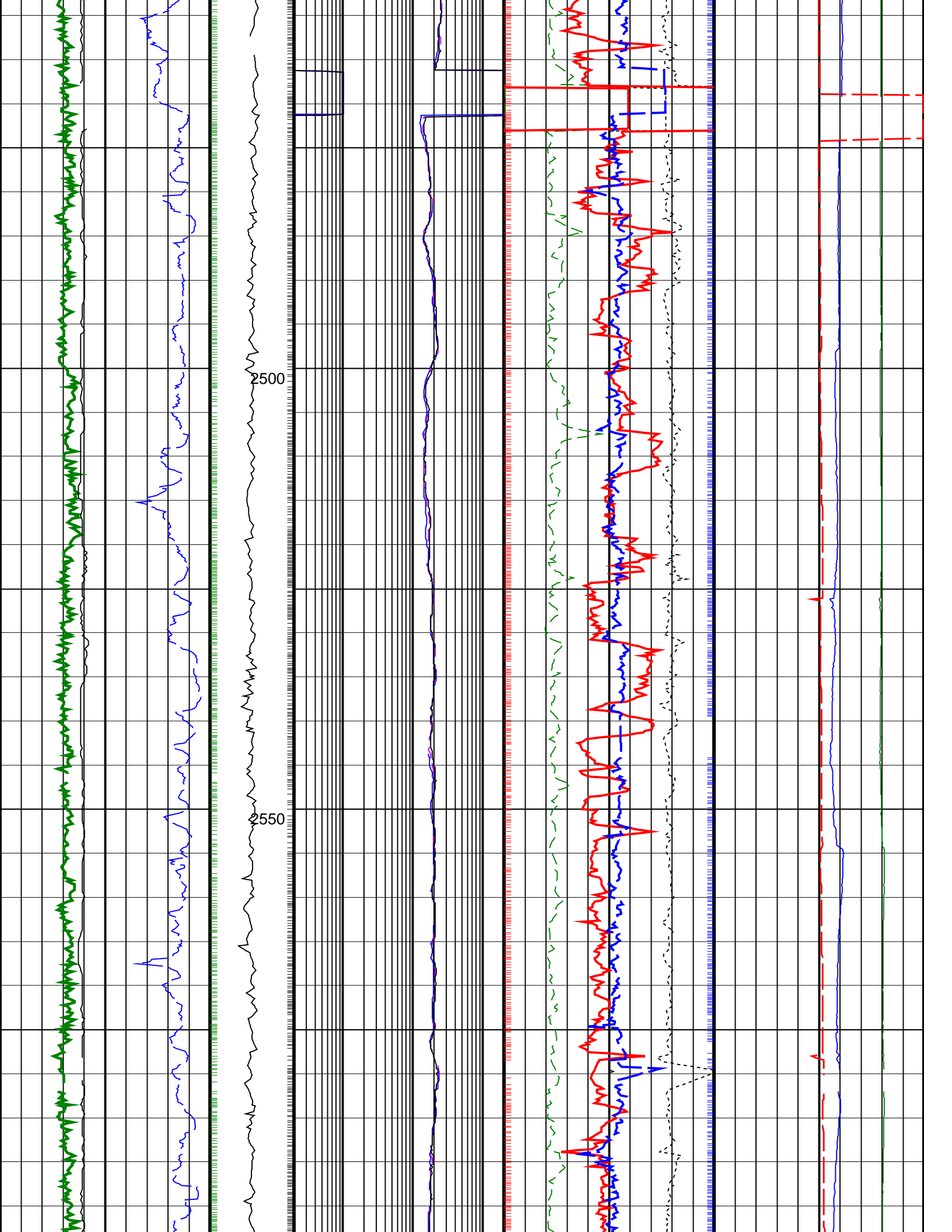


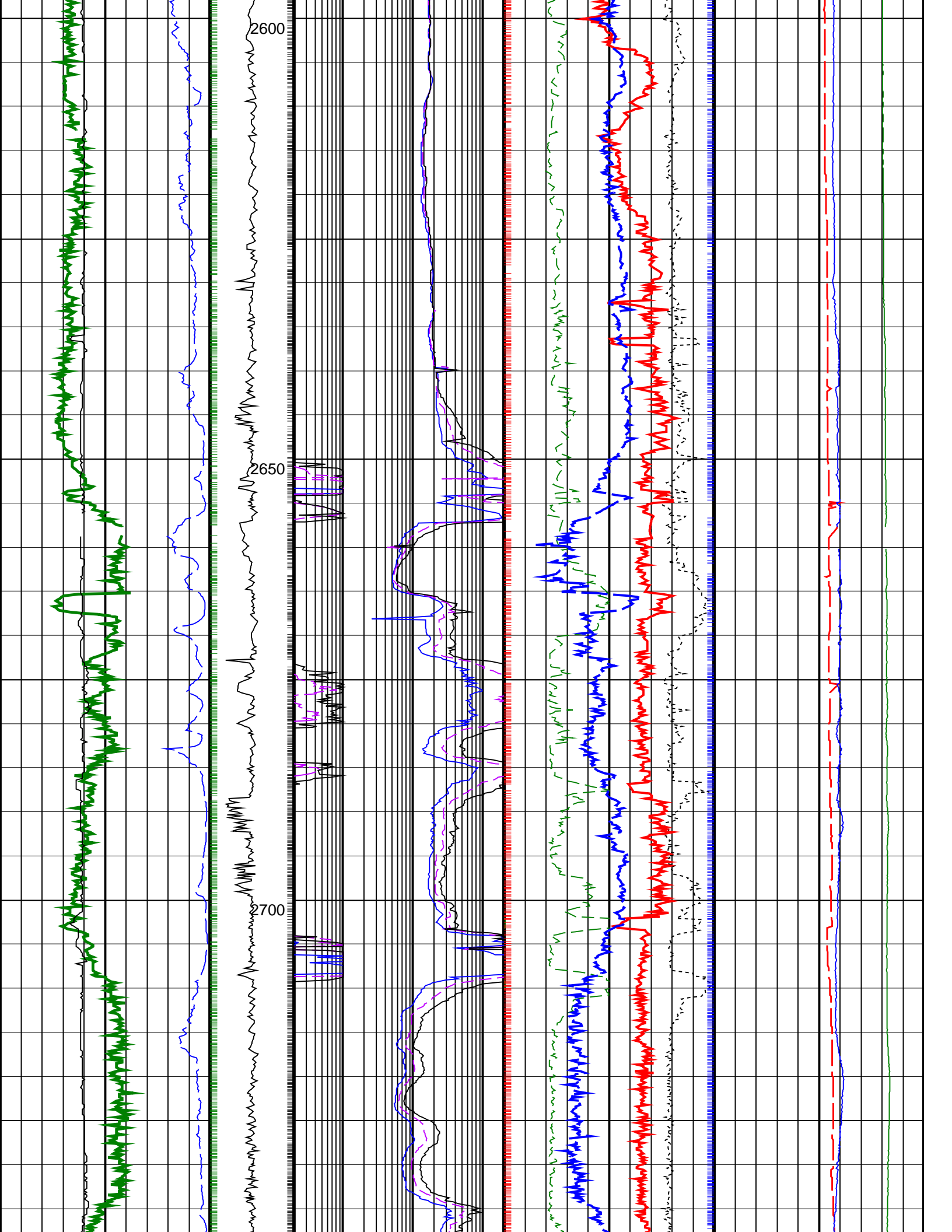
PIP SUMMARY

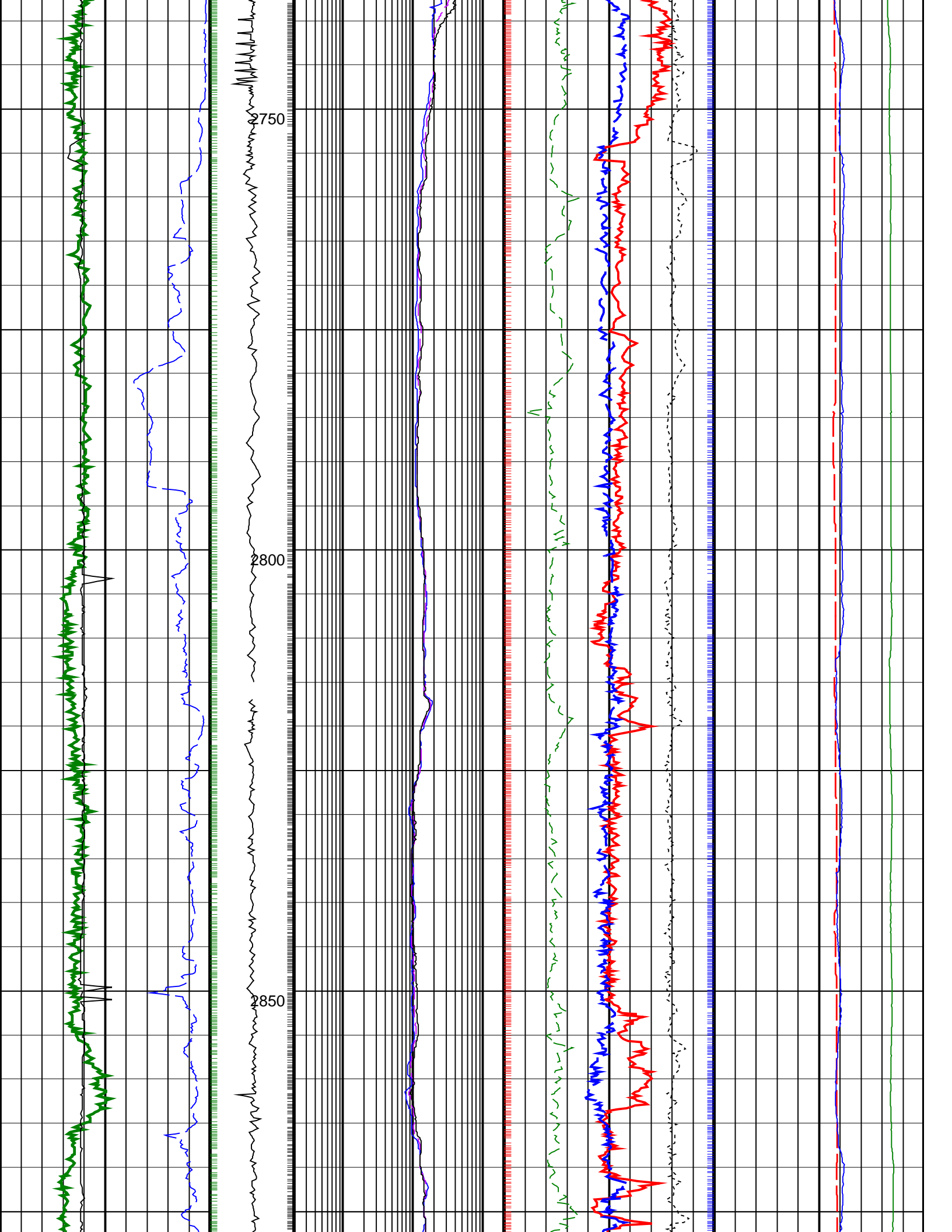
- Density Samples +
- Gamma Ray Samples +
- Resistivity Samples +
- Neutron Samples +

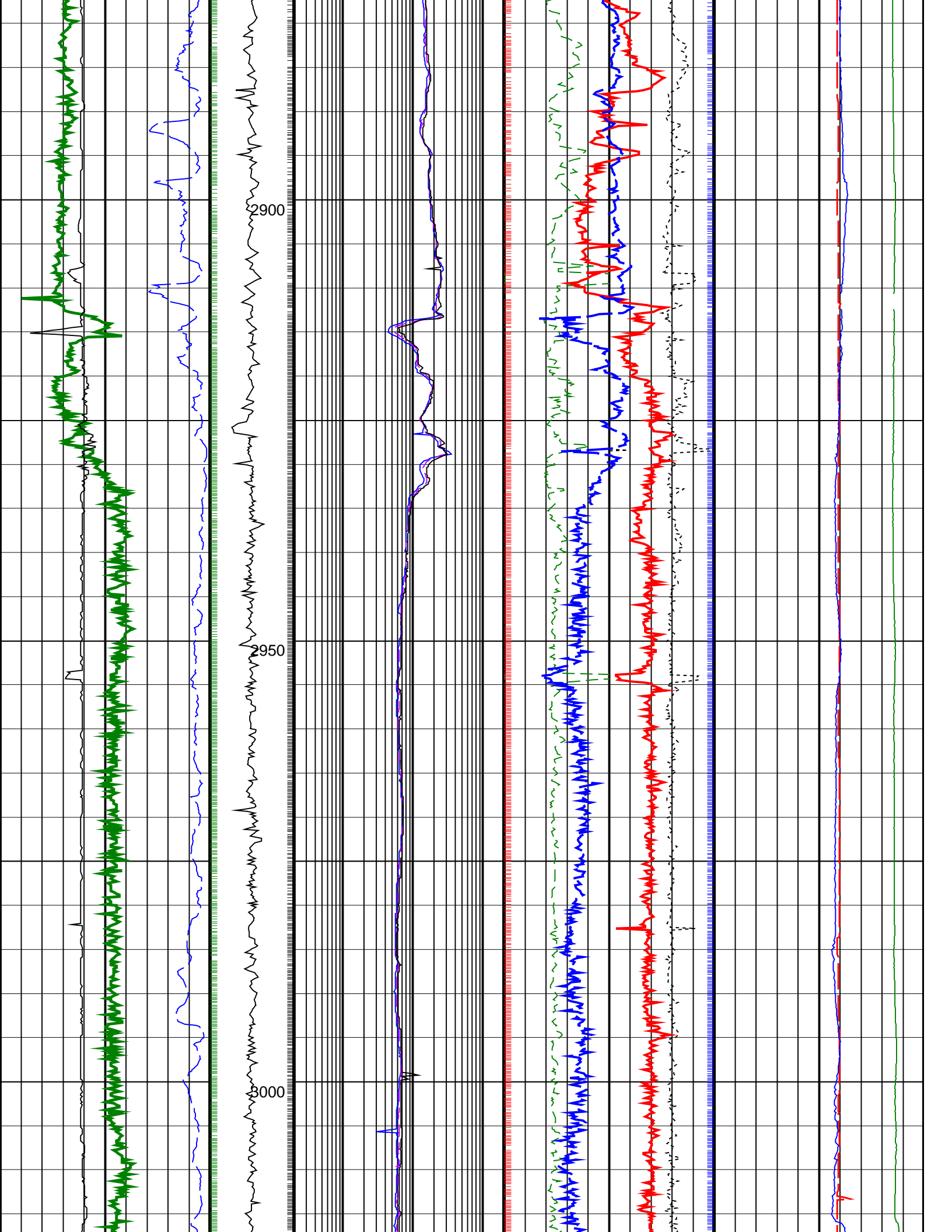
<p>Gamma Ray, Average, Real-Time, Computed Downhole (GRMA_DH_ECO_RT) (GAPI) 0 200</p>		<p>ARC Phase Shift Resistivity 40 inch at 2 MHz, Real-Time (P40H_ECO_RT) (OHMM) 0.2 200</p>	<p>Thermal Neutron Porosity, Average, Real-Time (TNPH_ECO_RT) (PU) 45 -15 10</p>	<p>Equivalent Circulating Density, Real-Time (ECD_ECO_RT) (LB/G) 15</p>
<p>Ultrasonic Caliper, Average Diameter, Real-Time, Computed Downhole (UCAV_DH_ECO_RT) (IN) 6 16</p>		<p>ARC Phase Shift Resistivity 28 inch at 2 MHz, Real-Time (P28H_ECO_RT) (OHMM) 0.2 200</p>	<p>Photoelectric Factor, Bottom, Real-Time, Computed Downhole (PEB_DH_ECO_RT) (G/C3) 0 10</p> <p>Bulk Density Correction, Bottom, Real-Time, Computed Downhole (DRHB_DH_ECO_RT) (G/C3) -0.25 0.25</p>	<p>Downhole Annulus Pressure, Real Time, Computed Downhole (DHAP_DH_ECO_RT) (PSI) 0 6000</p>
<p>ROP*5 (ROP5) (M/HR) 200 0</p>	<p>MWD Collar RPM (CRPM_RT) (RPM) 0 400</p>	<p>ARC Phase Shift Resistivity 16 inch at 2 MHz, Real-Time (P16H_ECO_RT) (OHMM) 0.2 200</p>	<p>Bulk Density, Bottom, Real-Time, Computed Downhole (ROBB_DH_ECO_RT) (G/C3) 1.85 2.85</p>	<p>Downhole Annulus Temperature, Real Time, Computed Downhole (DHAT_DH_ECO_RT) (DEGC) 0 200</p>

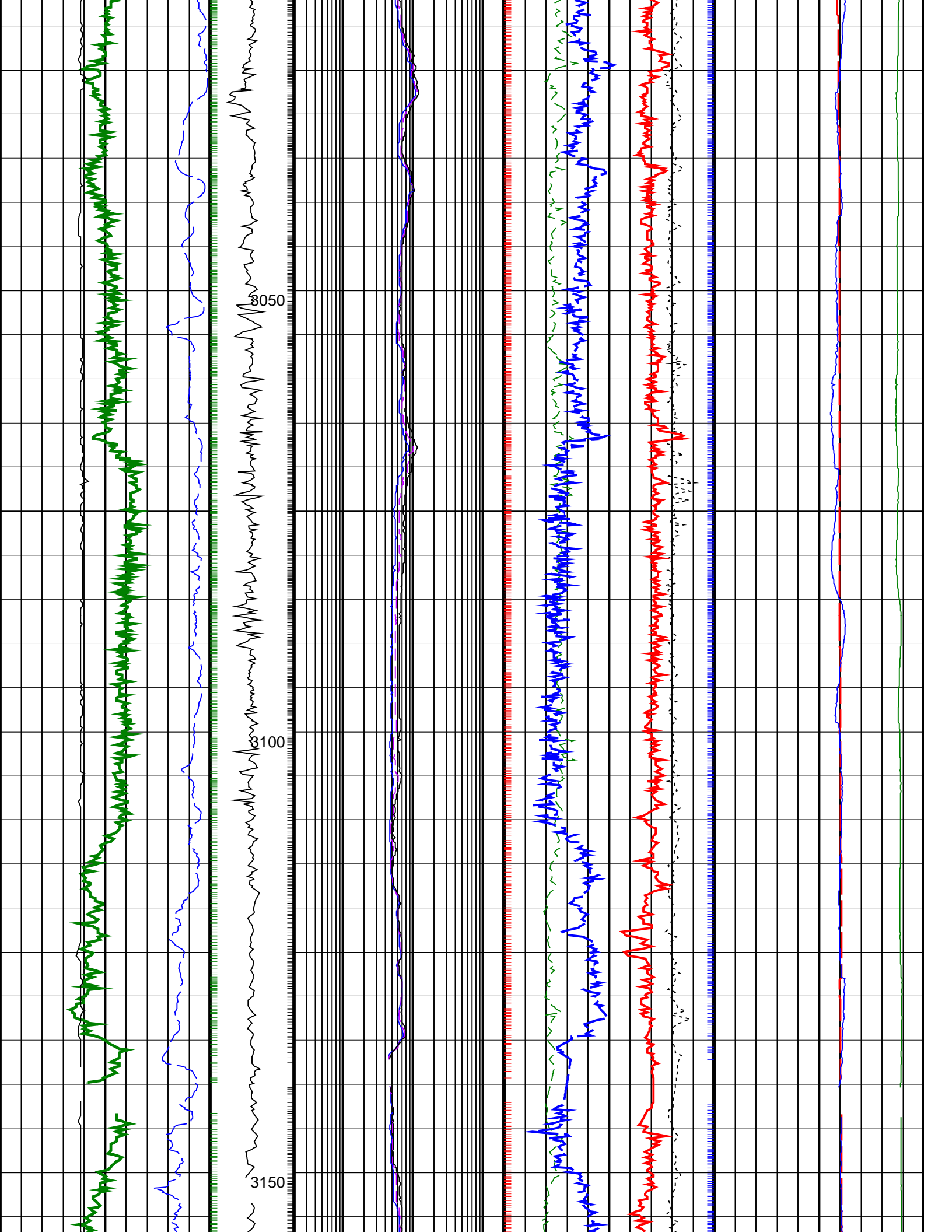


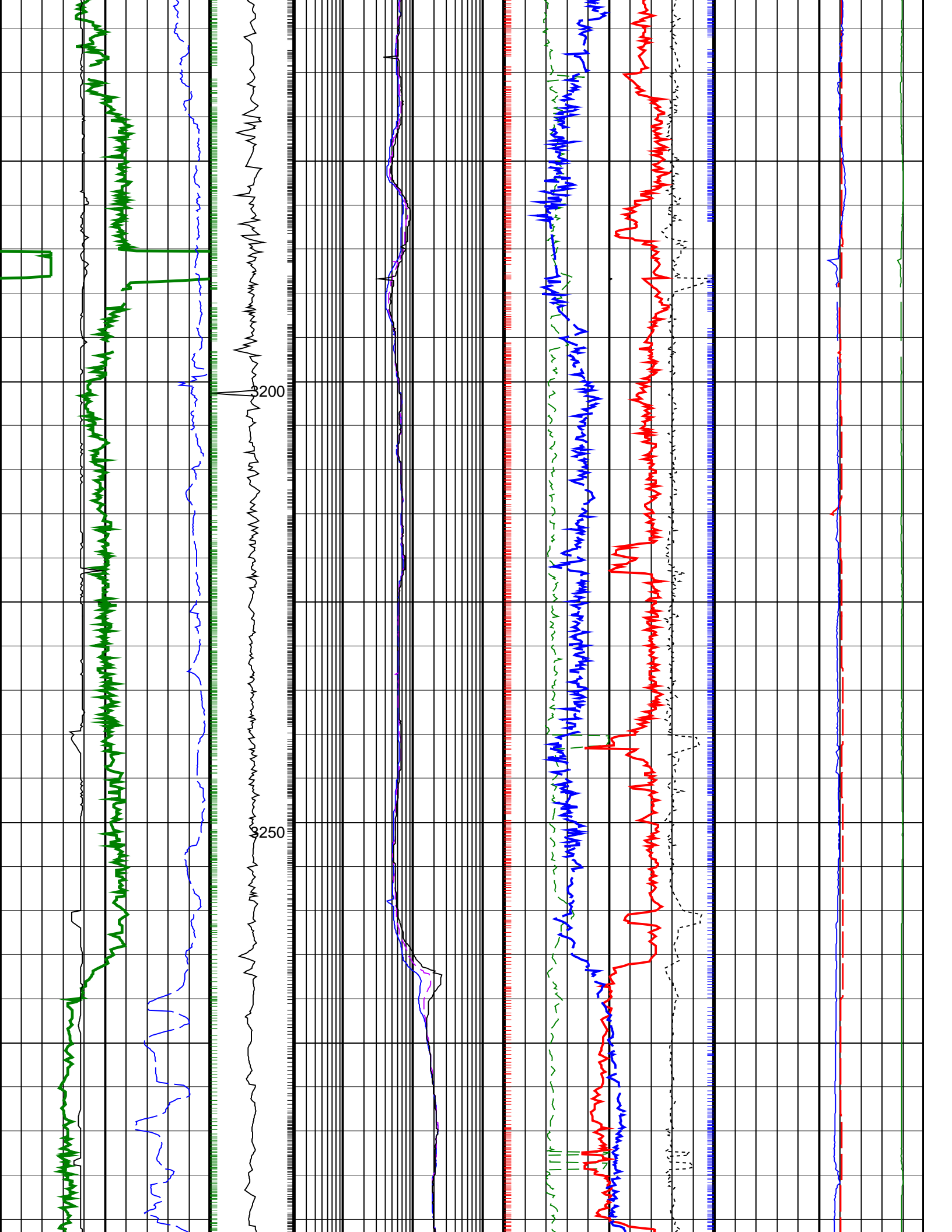


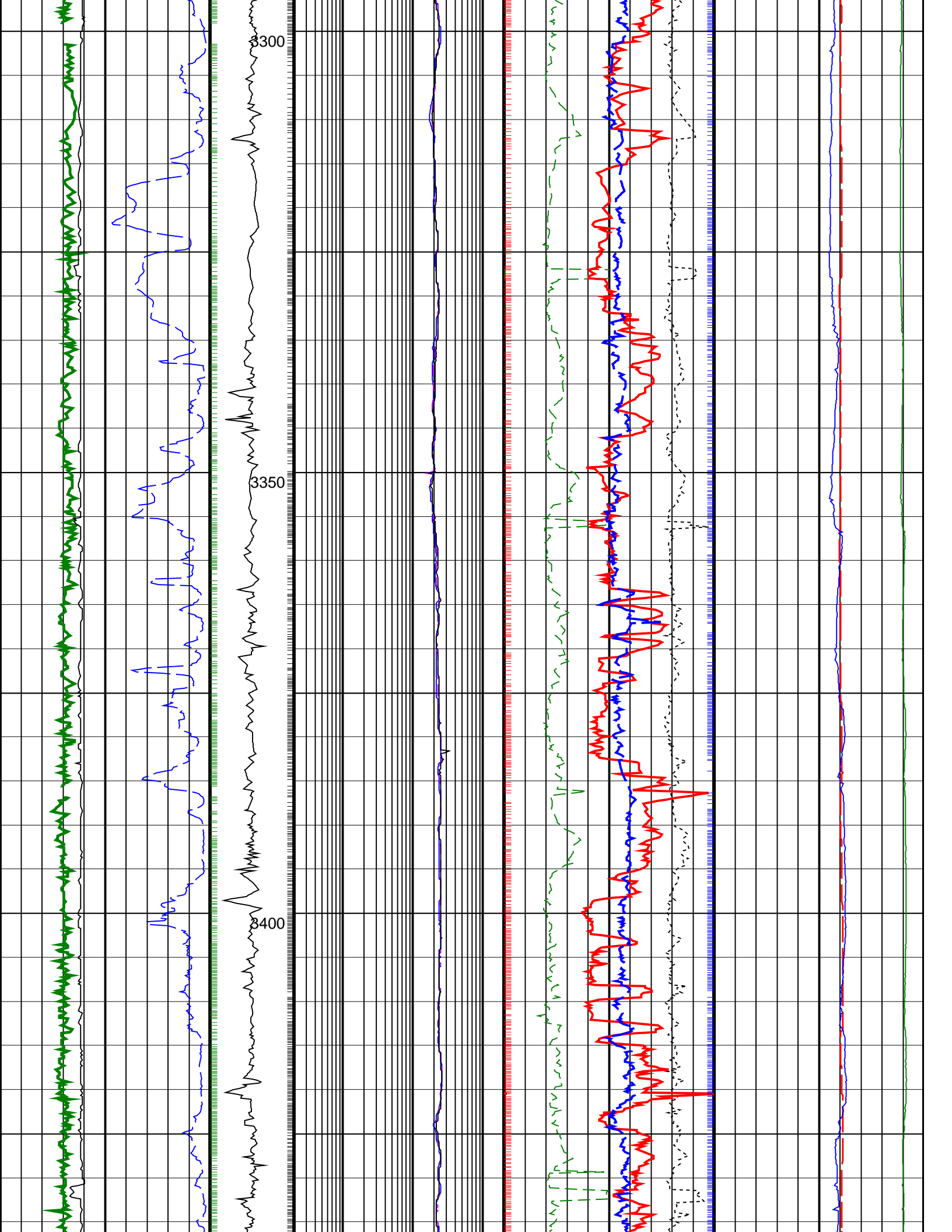


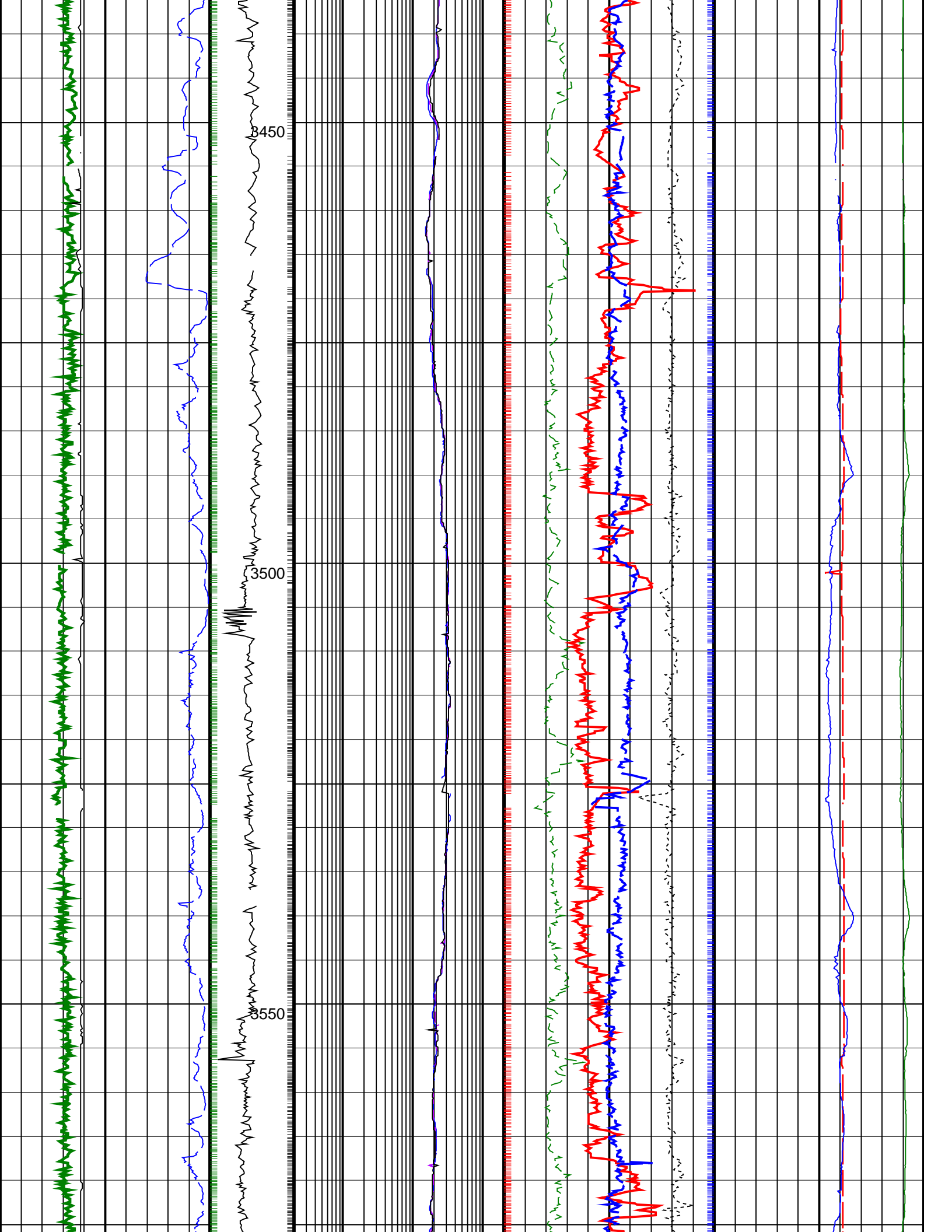


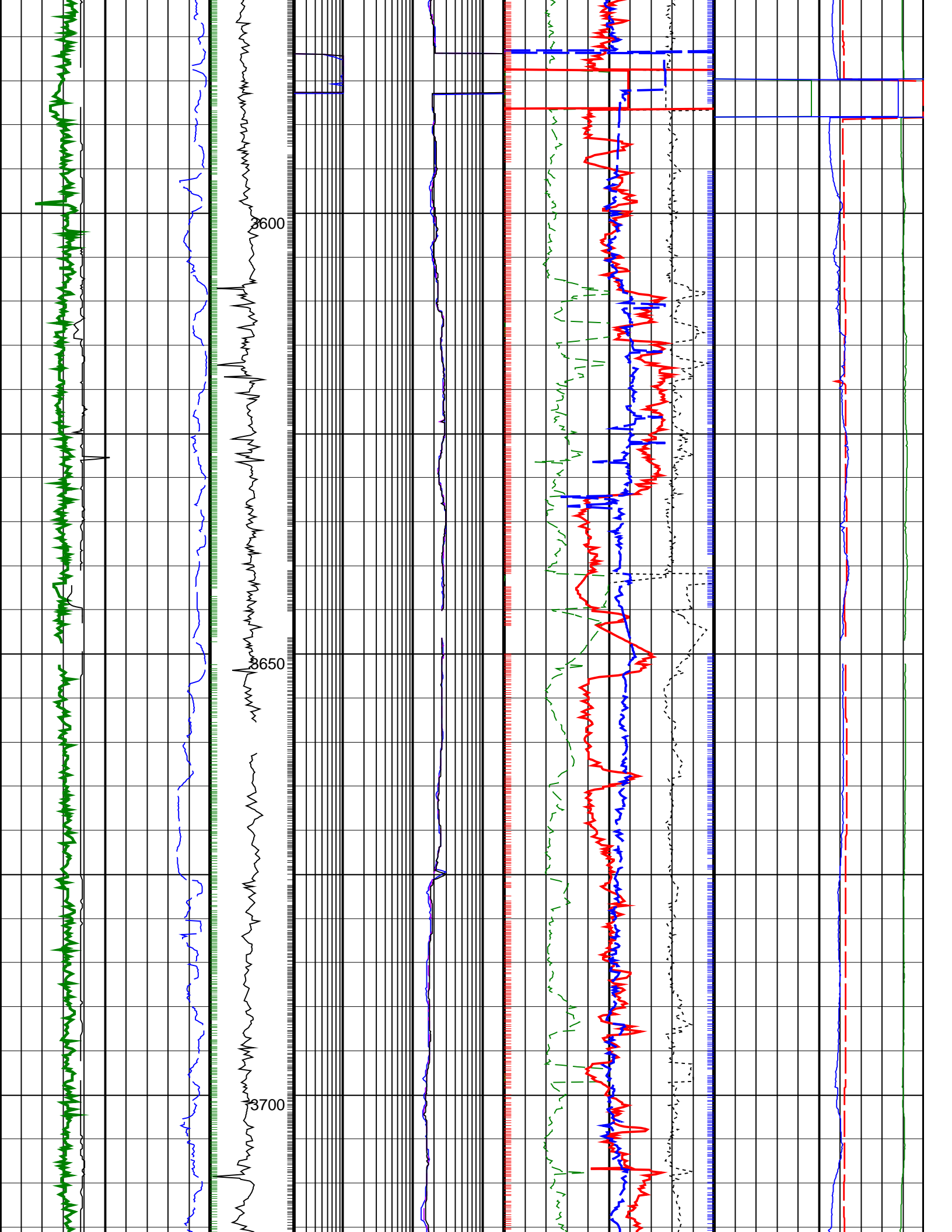


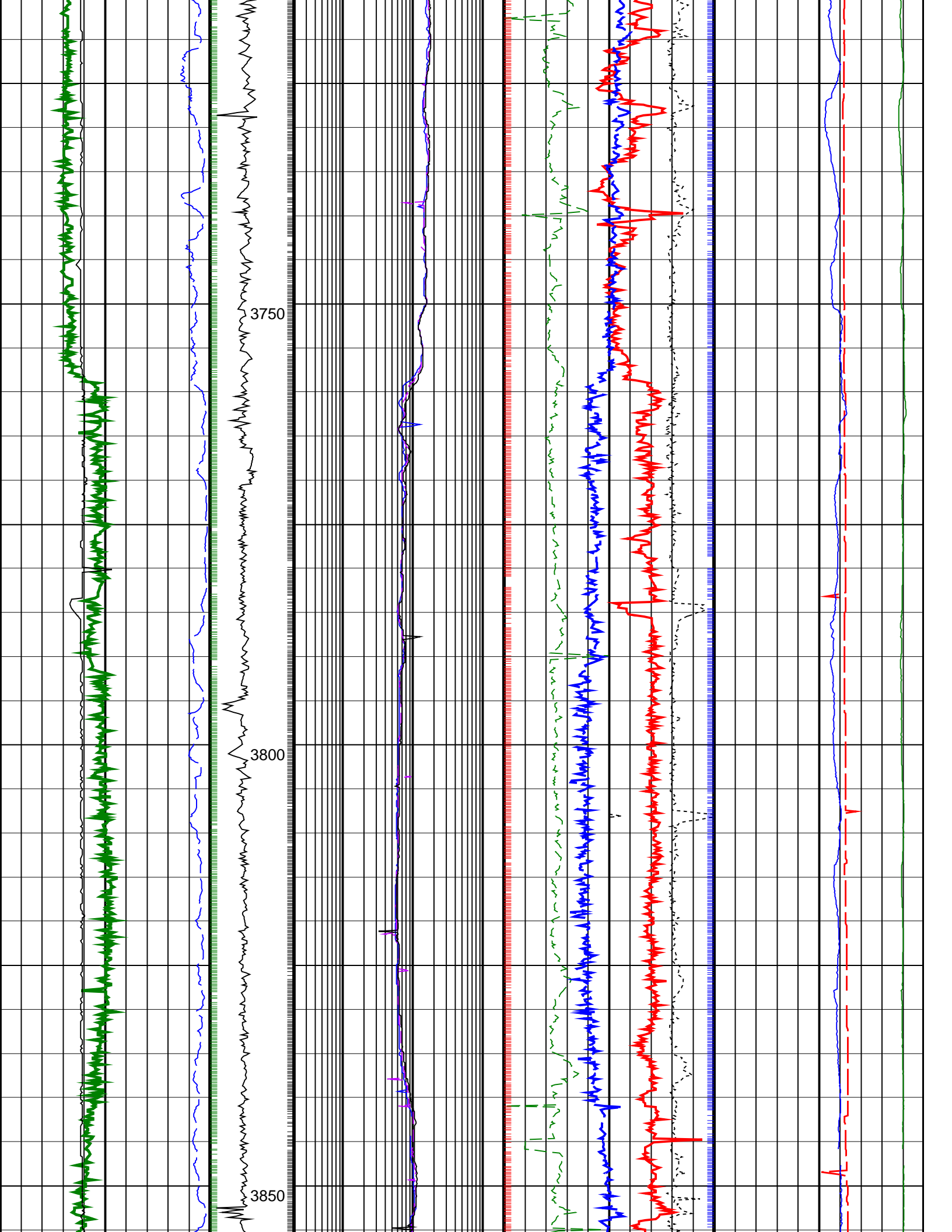


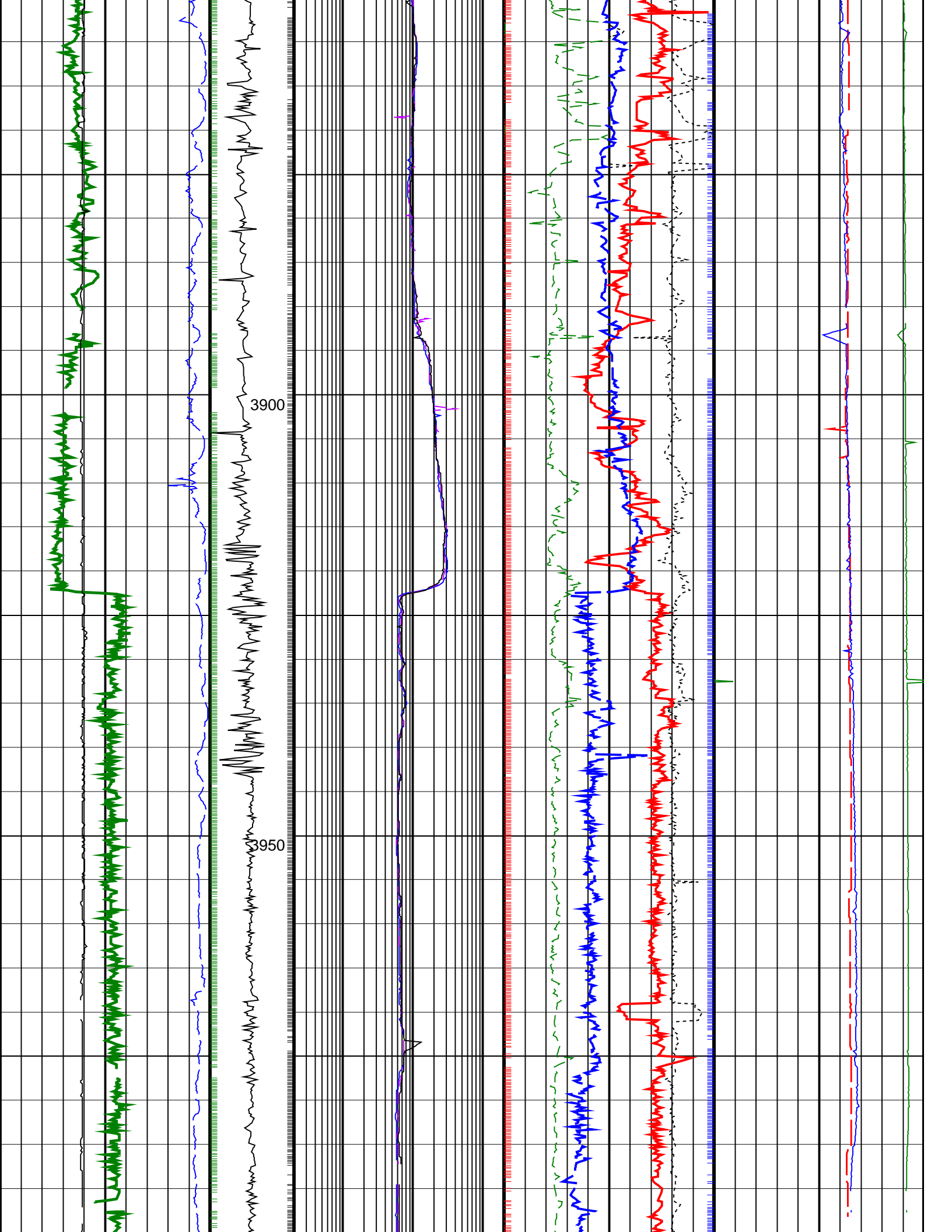


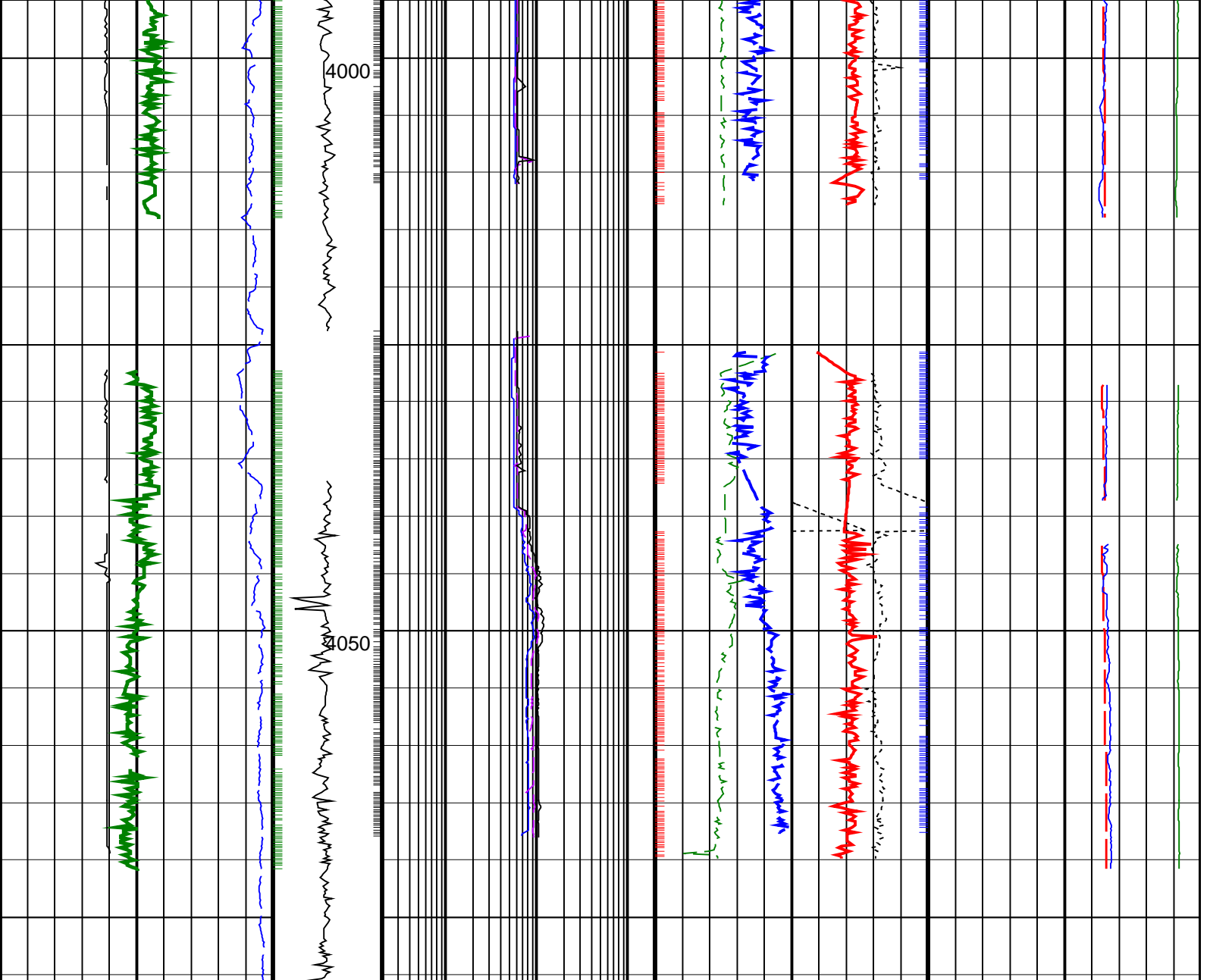












<p>ROP*5 (ROP5) (M/HR)</p> <p>200 0</p>	<p>MWD Collar RPM (CRPM_RT) (RPM)</p> <p>0 400</p>	<p>ARC Phase Shift Resistivity 16 inch at 2 MHz, Real-Time (P16H_ECO_RT)</p> <p>0.2 (OHMM) 200</p>	<p>Bulk Density, Bottom, Real-Time, Computed Downhole (ROBB_DH_ECO_RT)</p> <p>1.85 (G/C3) 2.85</p>	<p>Downhole Annulus Temperature, Real Time, Computed Downhole (DHAT_DH_ECO_RT)</p> <p>0 (DEGC) 200</p>	
<p>Utrasonic Caliper, Average Diameter, Real-Time, Computed Downhole (UCAV_DH_ECO_RT)</p> <p>6 (IN) 16</p>		<p>ARC Phase Shift Resistivity 28 inch at 2 MHz, Real-Time (P28H_ECO_RT)</p> <p>0.2 (OHMM) 200</p>	<p>Photoelectric Factor, Bottom, Real-Time, Computed Downhole (PEB_DH_ECO_RT)</p> <p>0 (----) 10</p>	<p>Bulk Density Correction, Bottom, Real-Time Computed Downhole (DRHB_DH_ECO_RT)</p> <p>-0.25 0.25 (G/C3)</p>	<p>Downhole Annulus Pressure, Real Time, Computed Downhole (DHAP_DH_ECO_RT)</p> <p>0 (PSI) 6000</p>
<p>Gamma Ray, Average, Real-Time, Computed Downhole (GRMA_DH_ECO_RT)</p> <p>0 (GAPI) 200</p>		<p>ARC Phase Shift Resistivity 40 inch at 2 MHz, Real-Time (P40H_ECO_RT)</p> <p>0.2 (OHMM) 200</p>	<p>Thermal Neutron Porosity, Average, Real-Time (TNPH_ECO_RT)</p> <p>45 (PU) -15</p>	<p>Equivalent Circulating Density, Real-Time (ECD_ECO_RT)</p> <p>10 (LB/G) 15</p>	

PIP SUMMARY

Density Samples

Gamma Ray Samples

Resistivity Samples

Neutron Samples

